



# GAGetrak<sup>®</sup> Software Update Instructions Version 6.7

## Thank you for requesting a GAGetrak software update!

Keeping your software up to date assures the best and most reliable service from GAGetrak.

### Download the Update

Use the link provided by Tech Support to download the setup file.

You will be given the option to run or save the file; save the file to your computer. Once the file is downloaded, the installer may start automatically. If it does not, double-click the **Download.exe** file; this action will place the **Setup.exe** file on your desktop. You will receive a confirmation that the download was successful; click **OK**.

NOTE: Some anti-virus applications mistakenly identify the Download.exe as unsafe. The purpose of the Download.exe program is to resume the downloading of large files in the event your Internet access is disrupted. If your anti-virus software has identified this file as unsafe and you are uncomfortable downloading it, contact Tech Support for an alternate link.

### Run the Installer

Clicking **OK** in the step above should begin the installation process; if it does not, double-click the **Setup.exe** file to begin the installation. You do not need an **Install Code**. When prompted for an **Extraction Password**, enter the **Extraction Password** provided by Tech Support.

### Link to Your GAGetrak Database

This update does not require any data migration; it uses your existing database and will not affect your data. When you launch GAGetrak, it should link to your existing database file. If it does not, navigate to **File -> Open Database** to locate and select your active database file.

### Technical Support

If you need assistance with your GAGetrak software update, please contact technical support at 1-800-777-7020 or support@cybermetrics.com.

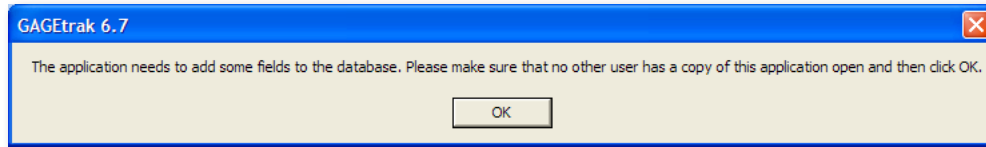
If upgrading from any 6.5x or 6.6x version of GAGetrak, please see pages 2 and 3 for further instruction.



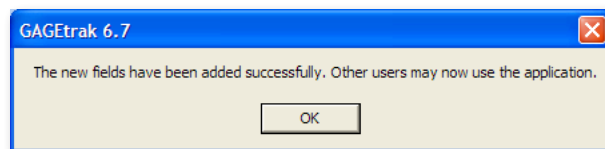
## Access Database

---

If you are upgrading from any 6.5x or 6.6x version of GAGetrak, you will see the following message when you connect to an Access database:



Make sure that no other user has that particular database open and then click **OK**. You should receive a confirmation that the fields have been successfully added:

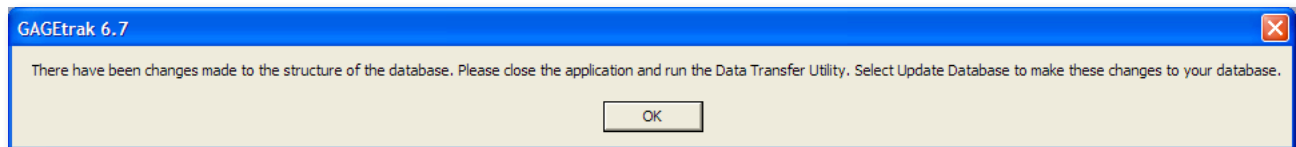


If you receive any message aside from the one above, please leave the message on the screen and contact Tech Support. If you have more than one database, you will need to repeat this process for each database.

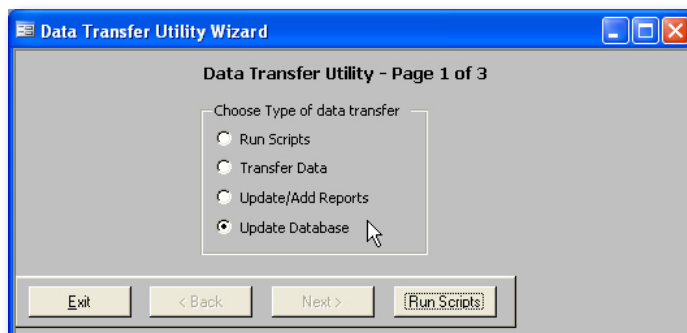
## SQL Database

---

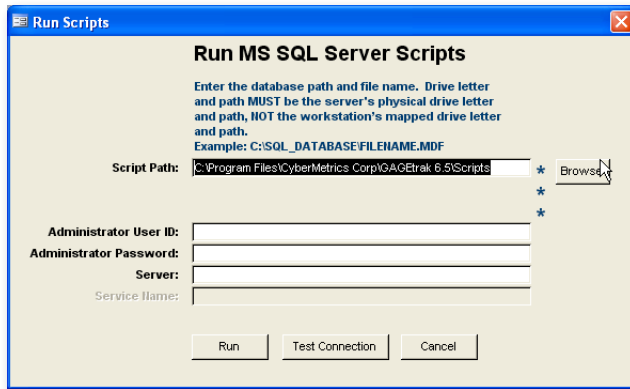
If you are upgrading from any 6.5x or 6.6x version of GAGetrak, you will see the following message when you connect to an SQL database:



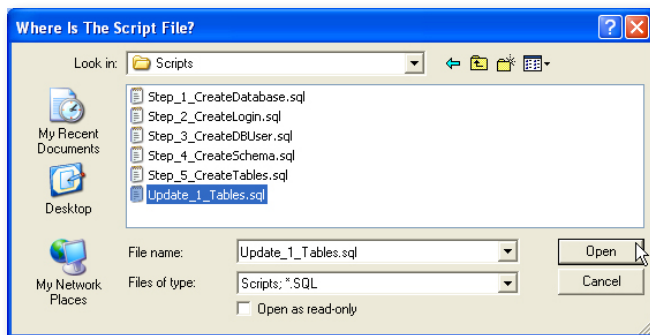
Click **OK** and close GAGetrak. If you use the default database name, GAGETRAK65 you can run the script through the DTU (Data Transfer Utility) which is located in your GAGetrak program group. Open the DTU, select **Update Database** and then click **Run Scripts**:



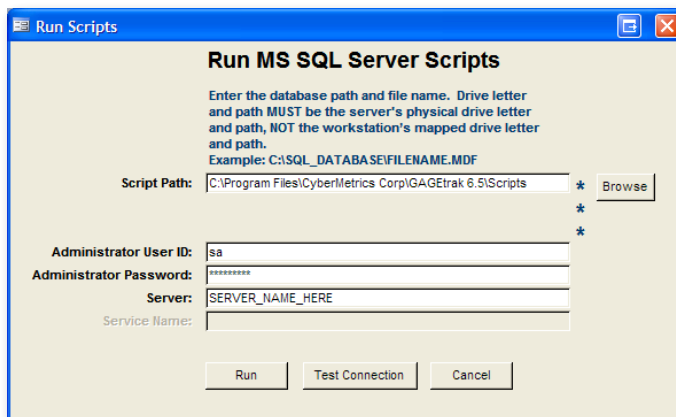
In the **Run Scripts** window, click **Browse**.



Navigate to and select the **Update\_1\_Tables.sql** script and then click **Open**. The location of this file is **C:\Program Files\CyberMetrics Corp\GAGetrak 6.5\Scripts** by default. If you selected a different directory during installation of GAGetrak, browse to that directory for the file. The list of script files in your browse window may vary from the screenshot below, only the **Update\_1\_Tables.sql** script is required.



Enter the Administrator User ID, Administrator Password and Server and then click **Run**. If everything has been entered correctly, you will see a message that says that the scripts have been run with no errors.



If you have more than one SQL database or if your database name is not **GAGETRAK65**, you will need to run the **Update\_1\_Tables.sql** script using your SQL tools. If you already have an SQL database, do not run any script other than the **Update\_1\_Tables.sql** script.